

# Wind Power Study in the Bradford Valley

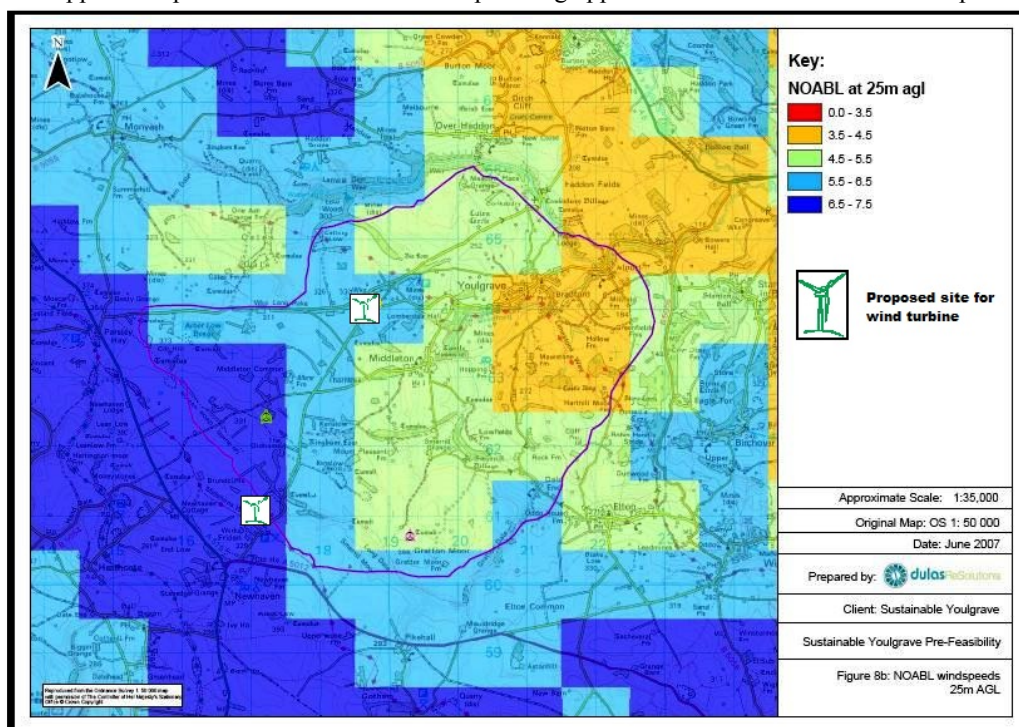
Updated, December 2, 2011

During 2007, independent consultant Dulas ReSolutions undertook a pre-feasibility study for SY in the Bradford Valley area to assess the potential for the generation of electricity from wind energy by medium and small scale turbines. They identified the most favourable sites and the most suitable medium-scale (330 & 75 kW) wind turbines and evaluated their predicted performance economically in financial and carbon reduction terms, with a 7-9 years payback & up to an annual maximum potential saving of 202 Tc of Carbon. A small-scale (2.5 kW) domestic wind turbine at one site was also briefly included in their report as an example. Overall, their study concluded initially that there were no technical or economic barriers to wind turbine generation within our Bradford Valley boundaries.

Following submission of a copy the report to the Peak District National Park Authority (PDNPA) and a meeting with them, they stated their preference for small-scale turbines only in the park and those which met the following criteria:

- Sensitive sited
- Painted appropriately
- Shielded as far as possible by buildings and trees

SY enquired about their willingness to consider an application for a single medium-scale turbine at each of the two industrial sites in the valley with identified favourable wind regimes (see windspeed map below). However, they replied that such an application would have to be submitted as an 'exceptional case' and include significantly more detailed and costly investigation to satisfy PDNPA considering such an application. Subsequently, SY have arranged the installation of a weather station (including wind resource measurement) at one of the industrial sites which is gathering data and automatically reporting and displaying it online (see . Additionally, SY supported a private 20 kW wind turbine planning application in Middleton & Smerril parish, which was eventually approved but has not yet been installed largely thought to the generation in meeting the PDNPA criteria.



approved  
been  
due it is  
limited  
potential  
strict

Brian Mallalieu  
2/12/2011